



REAL-TIME MEASUREMENT OF BODY TEMPERATURE



10 Days 
DELIVERY TIME
AFTER CONFIRMATION OF ORDER

REQUEST THEM THROUGH YOUR ACCOUNT MANAGER

WWW.VISIOTECHSECURITY.COM



Visiotech now supplies thermographic cameras for temperature control. The cameras are capable of analyzing human body temperature with great precision and can therefore detect cases of fever instantly. These solutions are currently being installed extensively in crowded places (supermarkets, hotels, transports) as a measure of containment of COVID-19.

SOLUTION 1: TEMPERATURE MEASUREMENT WITH HANDHELD CAMERA



SF-HANDHELD-160T05-E

- Thermal Resolution: 160x120
- Accuracy: $\pm 0.5^{\circ}\text{C}$
- NETD < 50mK
- Measuring Range: $35^{\circ}\text{C} \sim 45^{\circ}\text{C}$
- Detection Distance: 1 ~ 1.5 m



SF-HANDHELD-160T05

- Thermal Resolution: 160x120
- Optical Resolution: 640x480
- Accuracy: $\pm 0.5^{\circ}\text{C}$
- NETD < 50mK
- Measuring Range: $35^{\circ}\text{C} \sim 45^{\circ}\text{C}$
- Detection Distance: 1 ~ 1.5 m
- Configurable display fusion of thermal and optical view
- Possibility of monitoring on external monitor via PC

SOLUTION 1: TEMPERATURE MEASUREMENT WITH HANDHELD CAMERA



SF-HANDHELD-160T05Y

- Thermal Resolution: 160x120
- Accuracy: $\pm 0.5^{\circ}\text{C}$
- NETD < 40mK
- Measuring Range: $35^{\circ}\text{C} \sim 45^{\circ}\text{C}$
- Detection Distance: 1 ~ 1.5 m
- Battery life: 8h continuous



SF-HANDHELD-160TDW05Y

- Thermal Resolution: 160x120
- Optical Resolution: 8 MP
- Accuracy: $\pm 0.5^{\circ}\text{C}$
- NETD < 40mK
- Measuring Range: $35^{\circ}\text{C} \sim 45^{\circ}\text{C}$
- Detection Distance: 1 ~ 1.5 m
- Possibility of monitoring on PC, mobile phone or external monitor
- Audio | Wi-Fi | Video recording
- Battery life: 5 hours max

SOLUTION 1: TEMPERATURE DETECTION WITH A HANDHELD CAMERA



IPB503A-2TW

- Thermopile sensor
- Optical resolution: 1080P
- Accuracy: $\pm 0.3^{\circ}\text{C}$
- Facial detection
- ONVIF
- Temperature range: $20^{\circ}\text{C} \sim 45^{\circ}\text{C}$
- Recording on microS
- WiFi
- Two way audio
- Mobile app
- Measuring distance: 1 ~ 1,5 m
- 6000 mAh battery

SOLUTION 2: THERMOGRAPHIC BULLET CAMERA + MANAGEMENT AND MONITORING SOFTWARE

This solution is based on a thermographic dual bullet camera with high measurement accuracy of $\pm 0.5^{\circ}\text{C}$. These cameras incorporate an algorithm based on artificial intelligence for the detection of faces and an audible alarm that can be activated when the temperature measured on a face exceeds the pre-configured alarm, and can be monitored in the management software. Depending on the lens and resolution the cameras work for different types of

installation. The cameras with a low resolution and a short lens have a maximum detection distance of 2,5 m and limited detection range and are intended for tripod installation and control in individual rows. The cameras with high resolution and long lens allow a greater detection range and can be installed in wall or ceiling and make detections of up to 30 faces at the same time in a distance of up to 9 meters.



SF-IPTB105THA-3Y

- Thermal Resolution: 160x120
- Accuracy: $\pm 0.5^{\circ}\text{C}$
($\pm 0,3^{\circ}\text{C}$ by adding Blackbody)
- NETD < 40mK
- Measuring Range: $30^{\circ}\text{C} \sim 45^{\circ}\text{C}$
- Lens: 3 mm
- Detection Distance: 0.8 ~ 1.5 m

SF-IPTB305THA-10Y

- Thermal Resolution: 384x288
- Accuracy: $\pm 0.5^{\circ}\text{C}$
($\pm 0,3^{\circ}\text{C}$ by adding Blackbody)
- NETD < 35mK
- Measuring Range: $30^{\circ}\text{C} \sim 45^{\circ}\text{C}$
- Lens: 10 mm
- Detection Distance: 3 ~ 7 m



SF-IPTB105THA-6Y

- Thermal Resolution: 160x120
- Accuracy: $\pm 0.5^{\circ}\text{C}$ (
 $\pm 0,3^{\circ}\text{C}$ by adding Blackbody)
- NETD < 40mK
- Measuring Range: $30^{\circ}\text{C} \sim 45^{\circ}\text{C}$
- Lens: 6 mm
- Detection Distance: 1.5 ~ 2.5 m

SF-IPTB305THA-15Y

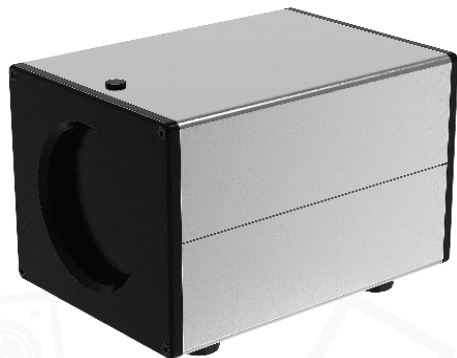
- Thermal Resolution: 384x288
- Accuracy: $\pm 0.5^{\circ}\text{C}$
($\pm 0,3^{\circ}\text{C}$ by adding Blackbody)
- NETD < 35mK
- Measuring Range: $30^{\circ}\text{C} \sim 45^{\circ}\text{C}$
- Lens: 15 mm
- Detection Distance: 4 ~ 9 m

SOLUTION 2: THERMOGRAPHIC BULLET CAMERA + MANAGEMENT AND MONITORING SOFTWARE

BLACKBODY

When measuring the temperature of a human body it is essential to achieve as exact a measurement as possible, as a few decimal points can determine whether a person has a fever or not.

By adding a blackbody to the thermographic bullet cameras you can achieve the highest measurement accuracy in the market of $\pm 0.3^{\circ}\text{C}$.



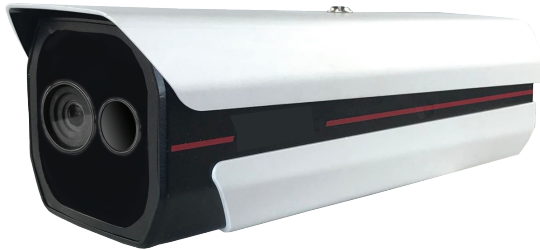
SF-BLACKBODY

- Temperature Range: $5^{\circ}\text{C} \sim 50^{\circ}\text{C}$
- Accuracy: $\pm 0.1^{\circ}\text{C}$
- Stability: $\pm 0.1^{\circ}\text{C}/\text{h}$
- Emissivity: $0.97 \pm 0.02^{\circ}\text{C}$

SOLUTION 3: THERMOGRAPHIC BULLET CAMERA + BLACKBODY + MANAGEMENT AND MONITORING SOFTWARE

This complete solution comes with the blackbody already included. The blackbody keeps the system permanently calibrated and offers the highest possible accuracy in the market of $\pm 0.3^{\circ}\text{C}$.

This solution incorporates facial detection so you avoid false alarms produced by people walking with a hot coffee, a warm light bulb etc and can detect up to 30 faces in the same scene making it ideal for places with a large influx of people such as hotels, big companies, airports, subways, etc.



Blackbody



Management and
Monitoring Software

KIT-BODYTEMP-BLACKBODY

- Thermal Resolution: 384x288
- Optical Resolution: 1920x1080
- Lens: 10 mm
- Accuracy: $\pm 0.3^{\circ}\text{C}$ (using Blackbody)
- Measuring Range: $30^{\circ}\text{C} \sim 50^{\circ}\text{C}$
- Detection Distance: 2 ~ 6 m
- Blackbody included

SOLUTION 3: THERMOGRAPHIC BULLET CAMERA + BLACKBODY + MANAGEMENT AND MONITORING SOFTWARE

This complete solution comes with the blackbody already included. The blackbody keeps the system permanently calibrated and offers the highest possible accuracy in the market of $\pm 0.3^{\circ}\text{C}$. This solution can detect 16 faces/second and is ideal for places with a large influx of people such as hotels, big companies, airports, subways, etc.

This solution incorporates facial detection so you avoid false alarms produced by people walking with a hot coffee, a warm light bulb etc. and also includes facial recognition so you can search through the detected faces afterwards in the management software.



Blackbody



Management and
Monitoring Software

KIT-PANDA-BLACKBODY

- Thermal Resolution: 400x300
- Optical Resolution: 1920x1080
- Lens: 8 mm
- Accuracy: $\pm 0.3^{\circ}\text{C}$ (using Blackbody)
- Measuring Range: $30^{\circ}\text{C} \sim 50^{\circ}\text{C}$
- Detection Distance: 2 ~ 6 m
- Blackbody included

ACCESS CONTROL



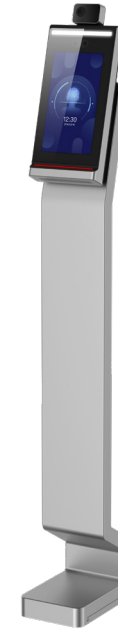
SF-AC3072KMFR-IP-TM

- Detection of Fever and Mask
- Facial Recognition & Mifare Card
- 50,000 faces, 100,000 registrations
- TCP/IP connection
- Temperature range 30 °C ~ 45°C
- Accuracy $\pm 0.5^{\circ}\text{C}$
- Detection distance 0,3 ~ 2 m
- Wall installation



SF-AC3077KRT-IPW-TM

- Detection of Fever and Mask
- Facial Recognition
- 50,000 faces, 100,000 registrations
- TCP/IP, Wi-Fi connection
- Temperature range 30 °C ~ 45°C
- Accuracy $\pm 0.5^{\circ}\text{C}$
- Detection distance 0,3 ~ 2 m
- Turnstile installation



SF-AC3076KMFR-IP-TM

- Detection of Fever and Mask
- Facial Recognition
- 50,000 faces, 100,000 registrations
- TCP/IP & WiFi connection
- Temperature range 30 °C ~ 45°C
- Accuracy $\pm 0.5^{\circ}\text{C}$
- Detection distance 0,3 ~ 2 m
- Plug & Play installation

ACCESS CONTROL



People Counting → 000137 → Body Temperature → 36.50°C

No. of metal detection alarms → 000000 → No. of temperature alarms → 000005



- ### SF-ACMETAL-TCAM-IP
- Metal Detection Arch
 - Thermal camera included
 - 18 metal detection areas
 - Optical sensor 4 MP 1/2.7"
 - Fever Detection | Accuracy $\pm 0.5^{\circ}\text{C}$

THERMOMETERS



Alarm
Screen flash

UT30R

- Infrared Thermometer
- Immediate & contactless measurement
- High measurement accuracy $\pm 0.3^{\circ}\text{C}$
- Measurement range $32^{\circ}\text{C} \sim 45^{\circ}\text{C}$
- Measuring distance: 5 - 10 cm
- Response time 500ms
- Autonomous battery system
- High temperature screen flashing alarm



Alarm
Sound

UT300R

- Infrared Thermometer
- Immediate & contactless measurement
- High measurement accuracy $\pm 0.3^{\circ}\text{C}$
- Measurement range $32^{\circ}\text{C} \sim 43^{\circ}\text{C}$
- Measuring distance: 5 - 10 cm
- Response time 250ms
- Autonomous battery system
- High temperature sound alarm



Alarm
Led
Sound

UT305R

- Infrared Thermometer
- Immediate & contactless measurement
- High measurement accuracy $\pm 0.3^{\circ}\text{C}$
- Measurement range $32^{\circ}\text{C} \sim 43^{\circ}\text{C}$
- Measuring distance: 5 - 10 cm
- Response time 250ms
- Autonomous battery system
- High temperature LED + sound alarm

STANDALONE FACIAL ACCESS CONTROL



FACE-TEMP

- Access Control
- Fever and Mask Detection
- Dual sensor facial recognition
- 22,400 faces, 100,000 registrations
- TCP/IP connection / Different settings
- Accuracy of $\pm 0.3^\circ$ at up to 80 cm
- Wall installation



FACE-TEMP-T

- Access Control
- Fever and Mask Detection
- Dual sensor facial recognition
- 22,400 faces, 100,000 registrations
- TCP/IP connection / Different settings
- Accuracy of $\pm 0.3^\circ$ at up to 80 cm
- Turnstile installation